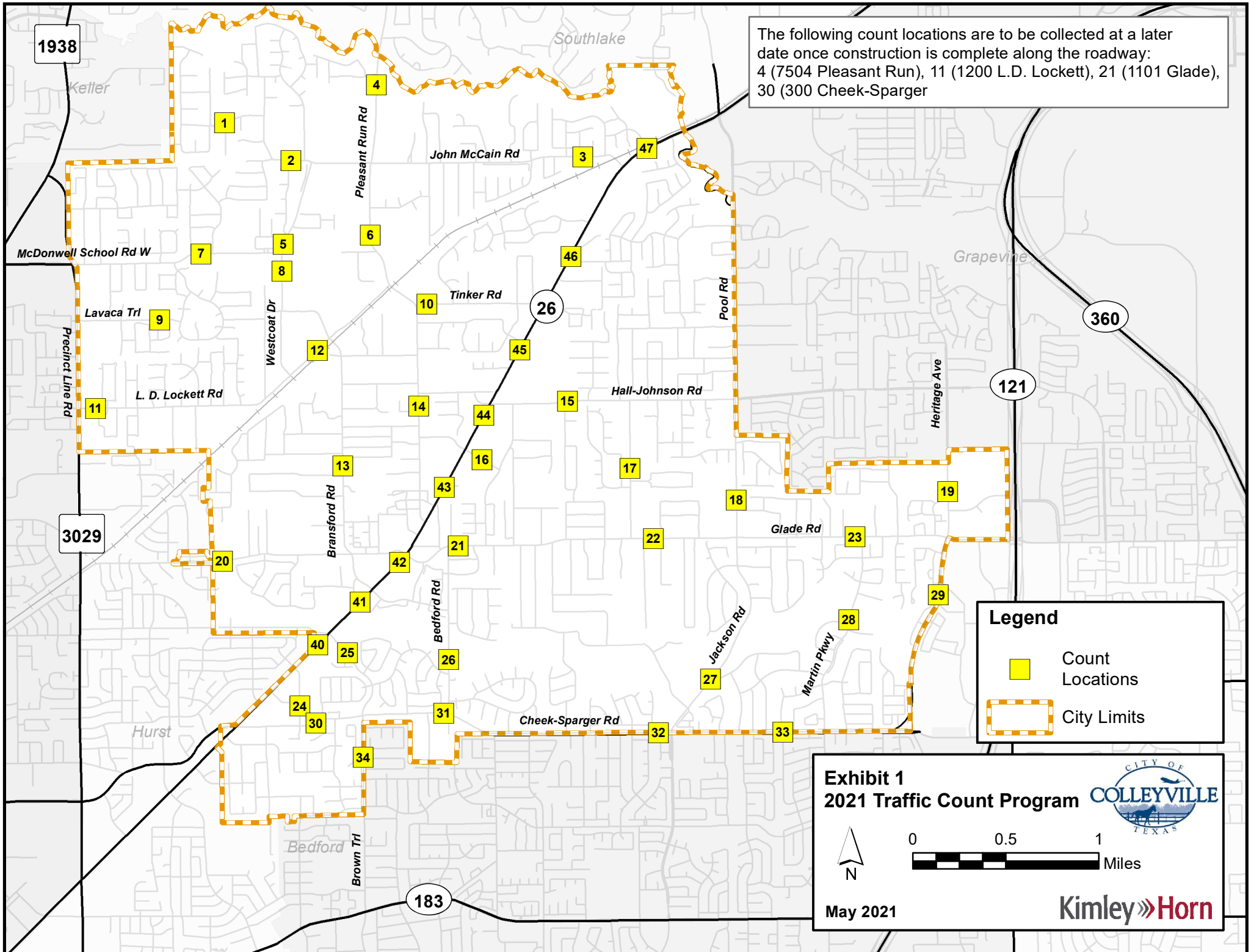



The following count locations are to be collected at a later date once construction is complete along the roadway:
 4 (7504 Pleasant Run), 11 (1200 L.D. Lockett), 21 (1101 Glade), 30 (300 Cheek-Sparger)



Legend

- Count Locations
- City Limits

Exhibit 1
2021 Traffic Count Program



0 0.5 1 Miles

May 2021

Kimley»Horn

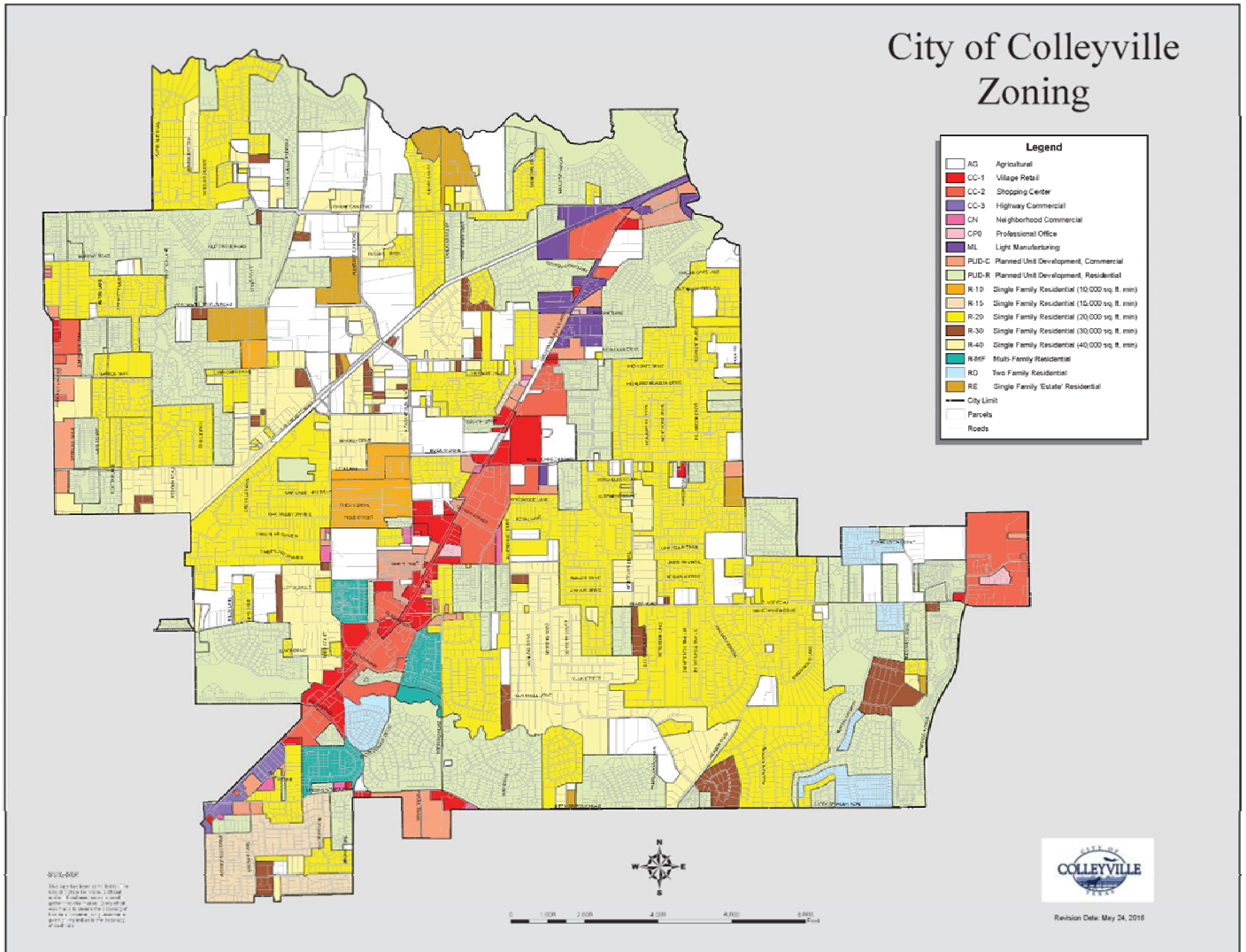
#	Roadway	Location	Percent Change	24-Hour		Peak Hour Totals		Prior Year's 24 Hour Totals																																																																																																																																																																																																																																													
				Directional	Combined	AM Peak	PM Peak	2016	2015	2014	2013	2012																																																																																																																																																																																																																																									
1-WB	304 Bandit Trail	Overland Trail to John McCain	39%	1,073	2,265	7:45-8:45 82	4:30-5:30 115	1,625	843	1,276	1,238	1,022																																																																																																																																																																																																																																									
1-EB				1,192		7:45-8:45 110	4:30-5:30 113						2-WB	200 John McCain	Bandit Trail to Pleasant Run	4%	1,100	2,298	7:30-8:30 66	4:30-5:30 102	2,201	1,933	1,840	2,043	4,658	2-EB	1,198	7:30-8:30 130	4:30-5:30 106	3-WB	1809 John McCain	Pleasant Run to Colleyville Blvd.	13%	6,332	12,768	7:30-8:30 308	4:45-5:45 806	11,274	8,420	8,784	6,743	8,137	3-EB	6,436	7:30-8:30 712	4:45-5:45 477	4-SB	7504 Pleasant Run	John McCain to City Limits		To be counted at later date				7,498	8,117	8,256	8,224	8,451	4-NB						5-SB	6600 Westcoat	McDonwell School to John McCain	-12%	4,402	8,804	7:15-8:15 183	5:00-6:00 600	10,023	8,134	7,290	6,344	6,163	5-NB	4,402	7:15-8:15 529	5:00-6:00 337	6-SB	6700 Pleasant Run	L.D. Lockett to John McCain	-53%	1,381	2,920	7:15-8:15 131	5:45-6:45 174	6,157	6,750	6,084	6,988	7,224	6-NB	1,539	7:15-8:15 152	5:45-6:45 160	7-WB	500 McDonwell School	Precinct Line to Westcoat	26%	5,820	11,920	7:15-8:15 272	4:45-5:45 742	9,455	9,294	8,520	6,718	7,557	7-EB	6,100	7:15-8:15 662	4:45-5:45 488	8-SB	6512 Westcoat	McDonwell School to White Drive	40%	2,269	4,189	7:30-8:30 203	4:30-5:30 178	2,998	3,211	2,846	3,322	3,121	8-NB	1,920	7:30-8:30 117	4:30-5:30 230	9-WB	711 Lavaca Trail	Precinct Line to Mustang Trail	86%	423	1225	8:00-9:00 31	5:15-6:15 46	660	506	548	417	490	9-EB	802	8:00-9:00 60	5:15-6:15 92	10-WB	909 Tinker	Pleasant Run to Colleyville Blvd.	-16%	1,835	3,417	7:30-8:30 95	5:00-6:00 226	4,085	4,178	4,076	4,216	4,085	10-EB	1,582	7:30-8:30 212	5:00-6:00 107	11-WB	1200 L.D. Lockett	Bettinger to Precinct Line		To be counted at later date				5,367	5,508	4,756	4,512	5,204	11-EB						12-WB	6108 L.D. Lockett	Bettinger to Pleasant Run	-29%	2,882	4,420	7:15-8:15 148	4:30-5:30 352	6,220	4,772	5,642	5,491	5,476	12-EB	1,538	7:15-8:15 182	4:30-5:30 124	13-SB	5318 Bransford	Glade to City Limits	-10%	1,951	4,022	7:30-8:30 147	5:00-6:00 212	4,451	4,128	4,191	3,409	3,480	13-NB	2,071	7:30-8:30 178	5:00-6:00 178	14-SB	5707 Pleasant Run	L.D. Lockett to Colleyville Blvd.	-19%	1,441	3,065	7:15-8:15 139	5:00-6:00 160	3,763	4,015	4,752	3,595	4,515	14-NB	1,624	7:15-8:15 179	5:00-6:00 141	15-WB	1700 Hall-Johnson	Colleyville Blvd. to Pool	-12%	7,453	13,755	7:30-8:30 575	4:30-5:30 773
2-WB	200 John McCain	Bandit Trail to Pleasant Run	4%	1,100	2,298	7:30-8:30 66	4:30-5:30 102	2,201	1,933	1,840	2,043	4,658																																																																																																																																																																																																																																									
2-EB				1,198		7:30-8:30 130	4:30-5:30 106						3-WB	1809 John McCain	Pleasant Run to Colleyville Blvd.	13%	6,332	12,768	7:30-8:30 308	4:45-5:45 806	11,274	8,420	8,784	6,743	8,137	3-EB	6,436	7:30-8:30 712	4:45-5:45 477	4-SB	7504 Pleasant Run	John McCain to City Limits		To be counted at later date				7,498	8,117	8,256	8,224	8,451	4-NB						5-SB	6600 Westcoat	McDonwell School to John McCain	-12%	4,402	8,804	7:15-8:15 183	5:00-6:00 600	10,023	8,134	7,290	6,344	6,163	5-NB	4,402	7:15-8:15 529	5:00-6:00 337	6-SB	6700 Pleasant Run	L.D. Lockett to John McCain	-53%	1,381	2,920	7:15-8:15 131	5:45-6:45 174	6,157	6,750	6,084	6,988	7,224	6-NB	1,539	7:15-8:15 152	5:45-6:45 160	7-WB	500 McDonwell School	Precinct Line to Westcoat	26%	5,820	11,920	7:15-8:15 272	4:45-5:45 742	9,455	9,294	8,520	6,718	7,557	7-EB	6,100	7:15-8:15 662	4:45-5:45 488	8-SB	6512 Westcoat	McDonwell School to White Drive	40%	2,269	4,189	7:30-8:30 203	4:30-5:30 178	2,998	3,211	2,846	3,322	3,121	8-NB	1,920	7:30-8:30 117	4:30-5:30 230	9-WB	711 Lavaca Trail	Precinct Line to Mustang Trail	86%	423	1225	8:00-9:00 31	5:15-6:15 46	660	506	548	417	490	9-EB	802	8:00-9:00 60	5:15-6:15 92	10-WB	909 Tinker	Pleasant Run to Colleyville Blvd.	-16%	1,835	3,417	7:30-8:30 95	5:00-6:00 226	4,085	4,178	4,076	4,216	4,085	10-EB	1,582	7:30-8:30 212	5:00-6:00 107	11-WB	1200 L.D. Lockett	Bettinger to Precinct Line		To be counted at later date				5,367	5,508	4,756	4,512	5,204	11-EB						12-WB	6108 L.D. Lockett	Bettinger to Pleasant Run	-29%	2,882	4,420	7:15-8:15 148	4:30-5:30 352	6,220	4,772	5,642	5,491	5,476	12-EB	1,538	7:15-8:15 182	4:30-5:30 124	13-SB	5318 Bransford	Glade to City Limits	-10%	1,951	4,022	7:30-8:30 147	5:00-6:00 212	4,451	4,128	4,191	3,409	3,480	13-NB	2,071	7:30-8:30 178	5:00-6:00 178	14-SB	5707 Pleasant Run	L.D. Lockett to Colleyville Blvd.	-19%	1,441	3,065	7:15-8:15 139	5:00-6:00 160	3,763	4,015	4,752	3,595	4,515	14-NB	1,624	7:15-8:15 179	5:00-6:00 141	15-WB	1700 Hall-Johnson	Colleyville Blvd. to Pool	-12%	7,453	13,755	7:30-8:30 575	4:30-5:30 773	15,573	14,412	14,959	14,573	17,732	15-EB	6,302	7:30-8:30 496	4:30-5:30 509								
3-WB	1809 John McCain	Pleasant Run to Colleyville Blvd.	13%	6,332	12,768	7:30-8:30 308	4:45-5:45 806	11,274	8,420	8,784	6,743	8,137																																																																																																																																																																																																																																									
3-EB				6,436		7:30-8:30 712	4:45-5:45 477						4-SB	7504 Pleasant Run	John McCain to City Limits		To be counted at later date				7,498	8,117	8,256	8,224	8,451	4-NB						5-SB	6600 Westcoat	McDonwell School to John McCain	-12%	4,402	8,804	7:15-8:15 183	5:00-6:00 600	10,023	8,134	7,290	6,344	6,163	5-NB	4,402	7:15-8:15 529	5:00-6:00 337	6-SB	6700 Pleasant Run	L.D. Lockett to John McCain	-53%	1,381	2,920	7:15-8:15 131	5:45-6:45 174	6,157	6,750	6,084	6,988	7,224	6-NB	1,539	7:15-8:15 152	5:45-6:45 160	7-WB	500 McDonwell School	Precinct Line to Westcoat	26%	5,820	11,920	7:15-8:15 272	4:45-5:45 742	9,455	9,294	8,520	6,718	7,557	7-EB	6,100	7:15-8:15 662	4:45-5:45 488	8-SB	6512 Westcoat	McDonwell School to White Drive	40%	2,269	4,189	7:30-8:30 203	4:30-5:30 178	2,998	3,211	2,846	3,322	3,121	8-NB	1,920	7:30-8:30 117	4:30-5:30 230	9-WB	711 Lavaca Trail	Precinct Line to Mustang Trail	86%	423	1225	8:00-9:00 31	5:15-6:15 46	660	506	548	417	490	9-EB	802	8:00-9:00 60	5:15-6:15 92	10-WB	909 Tinker	Pleasant Run to Colleyville Blvd.	-16%	1,835	3,417	7:30-8:30 95	5:00-6:00 226	4,085	4,178	4,076	4,216	4,085	10-EB	1,582	7:30-8:30 212	5:00-6:00 107	11-WB	1200 L.D. Lockett	Bettinger to Precinct Line		To be counted at later date				5,367	5,508	4,756	4,512	5,204	11-EB						12-WB	6108 L.D. Lockett	Bettinger to Pleasant Run	-29%	2,882	4,420	7:15-8:15 148	4:30-5:30 352	6,220	4,772	5,642	5,491	5,476	12-EB	1,538	7:15-8:15 182	4:30-5:30 124	13-SB	5318 Bransford	Glade to City Limits	-10%	1,951	4,022	7:30-8:30 147	5:00-6:00 212	4,451	4,128	4,191	3,409	3,480	13-NB	2,071	7:30-8:30 178	5:00-6:00 178	14-SB	5707 Pleasant Run	L.D. Lockett to Colleyville Blvd.	-19%	1,441	3,065	7:15-8:15 139	5:00-6:00 160	3,763	4,015	4,752	3,595	4,515	14-NB	1,624	7:15-8:15 179	5:00-6:00 141	15-WB	1700 Hall-Johnson	Colleyville Blvd. to Pool	-12%	7,453	13,755	7:30-8:30 575	4:30-5:30 773	15,573	14,412	14,959	14,573	17,732	15-EB	6,302	7:30-8:30 496	4:30-5:30 509																									
4-SB	7504 Pleasant Run	John McCain to City Limits		To be counted at later date				7,498	8,117	8,256	8,224	8,451																																																																																																																																																																																																																																									
4-NB														5-SB	6600 Westcoat	McDonwell School to John McCain	-12%	4,402	8,804	7:15-8:15 183	5:00-6:00 600	10,023	8,134	7,290	6,344	6,163	5-NB	4,402	7:15-8:15 529	5:00-6:00 337	6-SB	6700 Pleasant Run	L.D. Lockett to John McCain	-53%	1,381	2,920	7:15-8:15 131	5:45-6:45 174	6,157	6,750	6,084	6,988	7,224	6-NB	1,539	7:15-8:15 152	5:45-6:45 160	7-WB	500 McDonwell School	Precinct Line to Westcoat	26%	5,820	11,920	7:15-8:15 272	4:45-5:45 742	9,455	9,294	8,520	6,718	7,557	7-EB	6,100	7:15-8:15 662	4:45-5:45 488	8-SB	6512 Westcoat	McDonwell School to White Drive	40%	2,269	4,189	7:30-8:30 203	4:30-5:30 178	2,998	3,211	2,846	3,322	3,121	8-NB	1,920	7:30-8:30 117	4:30-5:30 230	9-WB	711 Lavaca Trail	Precinct Line to Mustang Trail	86%	423	1225	8:00-9:00 31	5:15-6:15 46	660	506	548	417	490	9-EB	802	8:00-9:00 60	5:15-6:15 92	10-WB	909 Tinker	Pleasant Run to Colleyville Blvd.	-16%	1,835	3,417	7:30-8:30 95	5:00-6:00 226	4,085	4,178	4,076	4,216	4,085	10-EB	1,582	7:30-8:30 212	5:00-6:00 107	11-WB	1200 L.D. Lockett	Bettinger to Precinct Line		To be counted at later date				5,367	5,508	4,756	4,512	5,204	11-EB						12-WB	6108 L.D. Lockett	Bettinger to Pleasant Run	-29%	2,882	4,420	7:15-8:15 148	4:30-5:30 352	6,220	4,772	5,642	5,491	5,476	12-EB	1,538	7:15-8:15 182	4:30-5:30 124	13-SB	5318 Bransford	Glade to City Limits	-10%	1,951	4,022	7:30-8:30 147	5:00-6:00 212	4,451	4,128	4,191	3,409	3,480	13-NB	2,071	7:30-8:30 178	5:00-6:00 178	14-SB	5707 Pleasant Run	L.D. Lockett to Colleyville Blvd.	-19%	1,441	3,065	7:15-8:15 139	5:00-6:00 160	3,763	4,015	4,752	3,595	4,515	14-NB	1,624	7:15-8:15 179	5:00-6:00 141	15-WB	1700 Hall-Johnson	Colleyville Blvd. to Pool	-12%	7,453	13,755	7:30-8:30 575	4:30-5:30 773	15,573	14,412	14,959	14,573	17,732	15-EB	6,302	7:30-8:30 496	4:30-5:30 509																																											
5-SB	6600 Westcoat	McDonwell School to John McCain	-12%	4,402	8,804	7:15-8:15 183	5:00-6:00 600	10,023	8,134	7,290	6,344	6,163																																																																																																																																																																																																																																									
5-NB				4,402		7:15-8:15 529	5:00-6:00 337						6-SB	6700 Pleasant Run	L.D. Lockett to John McCain	-53%	1,381	2,920	7:15-8:15 131	5:45-6:45 174	6,157	6,750	6,084	6,988	7,224	6-NB	1,539	7:15-8:15 152	5:45-6:45 160	7-WB	500 McDonwell School	Precinct Line to Westcoat	26%	5,820	11,920	7:15-8:15 272	4:45-5:45 742	9,455	9,294	8,520	6,718	7,557	7-EB	6,100	7:15-8:15 662	4:45-5:45 488	8-SB	6512 Westcoat	McDonwell School to White Drive	40%	2,269	4,189	7:30-8:30 203	4:30-5:30 178	2,998	3,211	2,846	3,322	3,121	8-NB	1,920	7:30-8:30 117	4:30-5:30 230	9-WB	711 Lavaca Trail	Precinct Line to Mustang Trail	86%	423	1225	8:00-9:00 31	5:15-6:15 46	660	506	548	417	490	9-EB	802	8:00-9:00 60	5:15-6:15 92	10-WB	909 Tinker	Pleasant Run to Colleyville Blvd.	-16%	1,835	3,417	7:30-8:30 95	5:00-6:00 226	4,085	4,178	4,076	4,216	4,085	10-EB	1,582	7:30-8:30 212	5:00-6:00 107	11-WB	1200 L.D. Lockett	Bettinger to Precinct Line		To be counted at later date				5,367	5,508	4,756	4,512	5,204	11-EB						12-WB	6108 L.D. Lockett	Bettinger to Pleasant Run	-29%	2,882	4,420	7:15-8:15 148	4:30-5:30 352	6,220	4,772	5,642	5,491	5,476	12-EB	1,538	7:15-8:15 182	4:30-5:30 124	13-SB	5318 Bransford	Glade to City Limits	-10%	1,951	4,022	7:30-8:30 147	5:00-6:00 212	4,451	4,128	4,191	3,409	3,480	13-NB	2,071	7:30-8:30 178	5:00-6:00 178	14-SB	5707 Pleasant Run	L.D. Lockett to Colleyville Blvd.	-19%	1,441	3,065	7:15-8:15 139	5:00-6:00 160	3,763	4,015	4,752	3,595	4,515	14-NB	1,624	7:15-8:15 179	5:00-6:00 141	15-WB	1700 Hall-Johnson	Colleyville Blvd. to Pool	-12%	7,453	13,755	7:30-8:30 575	4:30-5:30 773	15,573	14,412	14,959	14,573	17,732	15-EB	6,302	7:30-8:30 496	4:30-5:30 509																																																													
6-SB	6700 Pleasant Run	L.D. Lockett to John McCain	-53%	1,381	2,920	7:15-8:15 131	5:45-6:45 174	6,157	6,750	6,084	6,988	7,224																																																																																																																																																																																																																																									
6-NB				1,539		7:15-8:15 152	5:45-6:45 160						7-WB	500 McDonwell School	Precinct Line to Westcoat	26%	5,820	11,920	7:15-8:15 272	4:45-5:45 742	9,455	9,294	8,520	6,718	7,557	7-EB	6,100	7:15-8:15 662	4:45-5:45 488	8-SB	6512 Westcoat	McDonwell School to White Drive	40%	2,269	4,189	7:30-8:30 203	4:30-5:30 178	2,998	3,211	2,846	3,322	3,121	8-NB	1,920	7:30-8:30 117	4:30-5:30 230	9-WB	711 Lavaca Trail	Precinct Line to Mustang Trail	86%	423	1225	8:00-9:00 31	5:15-6:15 46	660	506	548	417	490	9-EB	802	8:00-9:00 60	5:15-6:15 92	10-WB	909 Tinker	Pleasant Run to Colleyville Blvd.	-16%	1,835	3,417	7:30-8:30 95	5:00-6:00 226	4,085	4,178	4,076	4,216	4,085	10-EB	1,582	7:30-8:30 212	5:00-6:00 107	11-WB	1200 L.D. Lockett	Bettinger to Precinct Line		To be counted at later date				5,367	5,508	4,756	4,512	5,204	11-EB						12-WB	6108 L.D. Lockett	Bettinger to Pleasant Run	-29%	2,882	4,420	7:15-8:15 148	4:30-5:30 352	6,220	4,772	5,642	5,491	5,476	12-EB	1,538	7:15-8:15 182	4:30-5:30 124	13-SB	5318 Bransford	Glade to City Limits	-10%	1,951	4,022	7:30-8:30 147	5:00-6:00 212	4,451	4,128	4,191	3,409	3,480	13-NB	2,071	7:30-8:30 178	5:00-6:00 178	14-SB	5707 Pleasant Run	L.D. Lockett to Colleyville Blvd.	-19%	1,441	3,065	7:15-8:15 139	5:00-6:00 160	3,763	4,015	4,752	3,595	4,515	14-NB	1,624	7:15-8:15 179	5:00-6:00 141	15-WB	1700 Hall-Johnson	Colleyville Blvd. to Pool	-12%	7,453	13,755	7:30-8:30 575	4:30-5:30 773	15,573	14,412	14,959	14,573	17,732	15-EB	6,302	7:30-8:30 496	4:30-5:30 509																																																																														
7-WB	500 McDonwell School	Precinct Line to Westcoat	26%	5,820	11,920	7:15-8:15 272	4:45-5:45 742	9,455	9,294	8,520	6,718	7,557																																																																																																																																																																																																																																									
7-EB				6,100		7:15-8:15 662	4:45-5:45 488						8-SB	6512 Westcoat	McDonwell School to White Drive	40%	2,269	4,189	7:30-8:30 203	4:30-5:30 178	2,998	3,211	2,846	3,322	3,121	8-NB	1,920	7:30-8:30 117	4:30-5:30 230	9-WB	711 Lavaca Trail	Precinct Line to Mustang Trail	86%	423	1225	8:00-9:00 31	5:15-6:15 46	660	506	548	417	490	9-EB	802	8:00-9:00 60	5:15-6:15 92	10-WB	909 Tinker	Pleasant Run to Colleyville Blvd.	-16%	1,835	3,417	7:30-8:30 95	5:00-6:00 226	4,085	4,178	4,076	4,216	4,085	10-EB	1,582	7:30-8:30 212	5:00-6:00 107	11-WB	1200 L.D. Lockett	Bettinger to Precinct Line		To be counted at later date				5,367	5,508	4,756	4,512	5,204	11-EB						12-WB	6108 L.D. Lockett	Bettinger to Pleasant Run	-29%	2,882	4,420	7:15-8:15 148	4:30-5:30 352	6,220	4,772	5,642	5,491	5,476	12-EB	1,538	7:15-8:15 182	4:30-5:30 124	13-SB	5318 Bransford	Glade to City Limits	-10%	1,951	4,022	7:30-8:30 147	5:00-6:00 212	4,451	4,128	4,191	3,409	3,480	13-NB	2,071	7:30-8:30 178	5:00-6:00 178	14-SB	5707 Pleasant Run	L.D. Lockett to Colleyville Blvd.	-19%	1,441	3,065	7:15-8:15 139	5:00-6:00 160	3,763	4,015	4,752	3,595	4,515	14-NB	1,624	7:15-8:15 179	5:00-6:00 141	15-WB	1700 Hall-Johnson	Colleyville Blvd. to Pool	-12%	7,453	13,755	7:30-8:30 575	4:30-5:30 773	15,573	14,412	14,959	14,573	17,732	15-EB	6,302	7:30-8:30 496	4:30-5:30 509																																																																																															
8-SB	6512 Westcoat	McDonwell School to White Drive	40%	2,269	4,189	7:30-8:30 203	4:30-5:30 178	2,998	3,211	2,846	3,322	3,121																																																																																																																																																																																																																																									
8-NB				1,920		7:30-8:30 117	4:30-5:30 230						9-WB	711 Lavaca Trail	Precinct Line to Mustang Trail	86%	423	1225	8:00-9:00 31	5:15-6:15 46	660	506	548	417	490	9-EB	802	8:00-9:00 60	5:15-6:15 92	10-WB	909 Tinker	Pleasant Run to Colleyville Blvd.	-16%	1,835	3,417	7:30-8:30 95	5:00-6:00 226	4,085	4,178	4,076	4,216	4,085	10-EB	1,582	7:30-8:30 212	5:00-6:00 107	11-WB	1200 L.D. Lockett	Bettinger to Precinct Line		To be counted at later date				5,367	5,508	4,756	4,512	5,204	11-EB						12-WB	6108 L.D. Lockett	Bettinger to Pleasant Run	-29%	2,882	4,420	7:15-8:15 148	4:30-5:30 352	6,220	4,772	5,642	5,491	5,476	12-EB	1,538	7:15-8:15 182	4:30-5:30 124	13-SB	5318 Bransford	Glade to City Limits	-10%	1,951	4,022	7:30-8:30 147	5:00-6:00 212	4,451	4,128	4,191	3,409	3,480	13-NB	2,071	7:30-8:30 178	5:00-6:00 178	14-SB	5707 Pleasant Run	L.D. Lockett to Colleyville Blvd.	-19%	1,441	3,065	7:15-8:15 139	5:00-6:00 160	3,763	4,015	4,752	3,595	4,515	14-NB	1,624	7:15-8:15 179	5:00-6:00 141	15-WB	1700 Hall-Johnson	Colleyville Blvd. to Pool	-12%	7,453	13,755	7:30-8:30 575	4:30-5:30 773	15,573	14,412	14,959	14,573	17,732	15-EB	6,302	7:30-8:30 496	4:30-5:30 509																																																																																																																
9-WB	711 Lavaca Trail	Precinct Line to Mustang Trail	86%	423	1225	8:00-9:00 31	5:15-6:15 46	660	506	548	417	490																																																																																																																																																																																																																																									
9-EB				802		8:00-9:00 60	5:15-6:15 92						10-WB	909 Tinker	Pleasant Run to Colleyville Blvd.	-16%	1,835	3,417	7:30-8:30 95	5:00-6:00 226	4,085	4,178	4,076	4,216	4,085	10-EB	1,582	7:30-8:30 212	5:00-6:00 107	11-WB	1200 L.D. Lockett	Bettinger to Precinct Line		To be counted at later date				5,367	5,508	4,756	4,512	5,204	11-EB						12-WB	6108 L.D. Lockett	Bettinger to Pleasant Run	-29%	2,882	4,420	7:15-8:15 148	4:30-5:30 352	6,220	4,772	5,642	5,491	5,476	12-EB	1,538	7:15-8:15 182	4:30-5:30 124	13-SB	5318 Bransford	Glade to City Limits	-10%	1,951	4,022	7:30-8:30 147	5:00-6:00 212	4,451	4,128	4,191	3,409	3,480	13-NB	2,071	7:30-8:30 178	5:00-6:00 178	14-SB	5707 Pleasant Run	L.D. Lockett to Colleyville Blvd.	-19%	1,441	3,065	7:15-8:15 139	5:00-6:00 160	3,763	4,015	4,752	3,595	4,515	14-NB	1,624	7:15-8:15 179	5:00-6:00 141	15-WB	1700 Hall-Johnson	Colleyville Blvd. to Pool	-12%	7,453	13,755	7:30-8:30 575	4:30-5:30 773	15,573	14,412	14,959	14,573	17,732	15-EB	6,302	7:30-8:30 496	4:30-5:30 509																																																																																																																																	
10-WB	909 Tinker	Pleasant Run to Colleyville Blvd.	-16%	1,835	3,417	7:30-8:30 95	5:00-6:00 226	4,085	4,178	4,076	4,216	4,085																																																																																																																																																																																																																																									
10-EB				1,582		7:30-8:30 212	5:00-6:00 107						11-WB	1200 L.D. Lockett	Bettinger to Precinct Line		To be counted at later date				5,367	5,508	4,756	4,512	5,204	11-EB						12-WB	6108 L.D. Lockett	Bettinger to Pleasant Run	-29%	2,882	4,420	7:15-8:15 148	4:30-5:30 352	6,220	4,772	5,642	5,491	5,476	12-EB	1,538	7:15-8:15 182	4:30-5:30 124	13-SB	5318 Bransford	Glade to City Limits	-10%	1,951	4,022	7:30-8:30 147	5:00-6:00 212	4,451	4,128	4,191	3,409	3,480	13-NB	2,071	7:30-8:30 178	5:00-6:00 178	14-SB	5707 Pleasant Run	L.D. Lockett to Colleyville Blvd.	-19%	1,441	3,065	7:15-8:15 139	5:00-6:00 160	3,763	4,015	4,752	3,595	4,515	14-NB	1,624	7:15-8:15 179	5:00-6:00 141	15-WB	1700 Hall-Johnson	Colleyville Blvd. to Pool	-12%	7,453	13,755	7:30-8:30 575	4:30-5:30 773	15,573	14,412	14,959	14,573	17,732	15-EB	6,302	7:30-8:30 496	4:30-5:30 509																																																																																																																																																		
11-WB	1200 L.D. Lockett	Bettinger to Precinct Line		To be counted at later date				5,367	5,508	4,756	4,512	5,204																																																																																																																																																																																																																																									
11-EB														12-WB	6108 L.D. Lockett	Bettinger to Pleasant Run	-29%	2,882	4,420	7:15-8:15 148	4:30-5:30 352	6,220	4,772	5,642	5,491	5,476	12-EB	1,538	7:15-8:15 182	4:30-5:30 124	13-SB	5318 Bransford	Glade to City Limits	-10%	1,951	4,022	7:30-8:30 147	5:00-6:00 212	4,451	4,128	4,191	3,409	3,480	13-NB	2,071	7:30-8:30 178	5:00-6:00 178	14-SB	5707 Pleasant Run	L.D. Lockett to Colleyville Blvd.	-19%	1,441	3,065	7:15-8:15 139	5:00-6:00 160	3,763	4,015	4,752	3,595	4,515	14-NB	1,624	7:15-8:15 179	5:00-6:00 141	15-WB	1700 Hall-Johnson	Colleyville Blvd. to Pool	-12%	7,453	13,755	7:30-8:30 575	4:30-5:30 773	15,573	14,412	14,959	14,573	17,732	15-EB	6,302	7:30-8:30 496	4:30-5:30 509																																																																																																																																																																				
12-WB	6108 L.D. Lockett	Bettinger to Pleasant Run	-29%	2,882	4,420	7:15-8:15 148	4:30-5:30 352	6,220	4,772	5,642	5,491	5,476																																																																																																																																																																																																																																									
12-EB				1,538		7:15-8:15 182	4:30-5:30 124						13-SB	5318 Bransford	Glade to City Limits	-10%	1,951	4,022	7:30-8:30 147	5:00-6:00 212	4,451	4,128	4,191	3,409	3,480	13-NB	2,071	7:30-8:30 178	5:00-6:00 178	14-SB	5707 Pleasant Run	L.D. Lockett to Colleyville Blvd.	-19%	1,441	3,065	7:15-8:15 139	5:00-6:00 160	3,763	4,015	4,752	3,595	4,515	14-NB	1,624	7:15-8:15 179	5:00-6:00 141	15-WB	1700 Hall-Johnson	Colleyville Blvd. to Pool	-12%	7,453	13,755	7:30-8:30 575	4:30-5:30 773	15,573	14,412	14,959	14,573	17,732	15-EB	6,302	7:30-8:30 496	4:30-5:30 509																																																																																																																																																																																						
13-SB	5318 Bransford	Glade to City Limits	-10%	1,951	4,022	7:30-8:30 147	5:00-6:00 212	4,451	4,128	4,191	3,409	3,480																																																																																																																																																																																																																																									
13-NB				2,071		7:30-8:30 178	5:00-6:00 178						14-SB	5707 Pleasant Run	L.D. Lockett to Colleyville Blvd.	-19%	1,441	3,065	7:15-8:15 139	5:00-6:00 160	3,763	4,015	4,752	3,595	4,515	14-NB	1,624	7:15-8:15 179	5:00-6:00 141	15-WB	1700 Hall-Johnson	Colleyville Blvd. to Pool	-12%	7,453	13,755	7:30-8:30 575	4:30-5:30 773	15,573	14,412	14,959	14,573	17,732	15-EB	6,302	7:30-8:30 496	4:30-5:30 509																																																																																																																																																																																																							
14-SB	5707 Pleasant Run	L.D. Lockett to Colleyville Blvd.	-19%	1,441	3,065	7:15-8:15 139	5:00-6:00 160	3,763	4,015	4,752	3,595	4,515																																																																																																																																																																																																																																									
14-NB				1,624		7:15-8:15 179	5:00-6:00 141						15-WB	1700 Hall-Johnson	Colleyville Blvd. to Pool	-12%	7,453	13,755	7:30-8:30 575	4:30-5:30 773	15,573	14,412	14,959	14,573	17,732	15-EB	6,302	7:30-8:30 496	4:30-5:30 509																																																																																																																																																																																																																								
15-WB	1700 Hall-Johnson	Colleyville Blvd. to Pool	-12%	7,453	13,755	7:30-8:30 575	4:30-5:30 773	15,573	14,412	14,959	14,573	17,732																																																																																																																																																																																																																																									
15-EB				6,302		7:30-8:30 496	4:30-5:30 509																																																																																																																																																																																																																																														

#	Roadway	Location		24-Hour		Peak Hour Totals		Prior Year's 24 Hour Totals																																																																																																																																																																																																																																													
				Directional	Combined	AM Peak	PM Peak	2016	2015	2014	2013	2012																																																																																																																																																																																																																																									
16-WB	1221 Church	Colleyville Blvd. to Riverwalk	75%	3,971	5,545	7:15-8:15 234	4:15-5:15 395	3,168	3,037	2,723	2,778	4,506																																																																																																																																																																																																																																									
16-EB				1,574		7:15-8:15 103	4:15-5:15 113						17-SB	Montclair	Glade to Hall-Johnson	9%	610	1,366	7:30-8:30 35	3:45-4:45 48	0	1,258	1,014	1,019	1,205	17-NB	756	7:30-8:30 65	3:45-4:45 78	18-SB	5208 Pool	Glade to City Limits	15%	3,698	7,788	7:15-8:15 331	4:45-5:45 438	6,758	5,185	6,753	7,064	7,317	18-NB	4,090	7:15-8:15 430	4:45-5:45 328	19-SB	5401 Heritage	Glade to City Limits	-16%	2,982	7,304	7:15-8:15 417	3:00-4:00 400	8,656	7,362	6,502	5,353	7,847	19-NB	4,322	7:15-8:15 584	3:00-4:00 466	20-WB	301 W. Glade	City Limits to Colleyville Blvd.	6%	4,827	10,023	7:30-8:30 198	5:00-6:00 554	9,490	9,618	9,480	9,177	9,274	20-EB	5,196	7:30-8:30 510	5:00-6:00 382	21-WB	1101 Glade	Colleyville Blvd. to Blue Bonnet	To be counted at later date					12,322	13,085	13,557	13,433	14,250	21-EB						22-WB	2209 Glade	Bluebonnet to Pool	-31%	3,135	7,549	7:30-8:30 188	4:00-5:00 302	10,895	11,293	11,144	12,147	11,183	22-EB	4,414	7:30-8:30 335	4:00-5:00 338	23-WB	3400 Glade	Pool to City Limits	-21%	5,289	10,744	7:15-8:15 290	5:00-6:00 513	13,610	13,625	13,796	14,501	14,478	23-EB	5,455	7:15-8:15 480	5:00-6:00 414	24-SB	4012 Felps	Colleyville Blvd. to Cheek-Sparger	12%	158	346	9:00-10:00 14	5:45-6:45 17	310	279	361	343	346	24-NB	188	9:00-10:00 17	5:45-6:45 17	25-SB	4203 Brown Trail	Colleyville Blvd. to Cheek-Sparger	59%	5,340	8,733	7:15-8:15 412	5:00-6:00 507	5,484	5,110	5,197	6,045	7,084	25-NB	3,393	7:15-8:15 250	5:00-6:00 304	26-SB	4301 Bedford Rd.	Glade to Cheek-Sparger	-3%	2,296	5,186	7:15-8:15 155	5:00-6:00 244	5,353	6,012	5,096	5,252	4,955	26-NB	2,890	7:15-8:15 277	5:00-6:00 282	27-SB	4120 Jackson Rd.	Glade to Cheek-Sparger	19%	3,524	6,389	7:30-8:30 207	5:00-6:00 442	5,360	3,161	5,882	4,702	6,977	27-NB	2,865	7:30-8:30 252	5:00-6:00 252	28-SB	4405 Martin Pkwy.	Glade to Cheek-Sparger	1%	800	1,586	7:15-8:15 58	4:00-5:00 78	1,566	1,707	1,745	2,195	2,392	28-NB	786	7:15-8:15 81	4:00-5:00 71	29-SB	2800 Heritage	Glade to Cheek-Sparger	137%	2,026	3,949	7:15-8:15 125	5:15-6:15 228	1,663	2,079	1,009	724	398	29-NB	1,923	7:15-8:15 208	5:15-6:15 163	30-WB	300 Cheek-Sparger	Brown Trail to Colleyville Boulevard	To be counted at later date					9,606	9,801
17-SB	Montclair	Glade to Hall-Johnson	9%	610	1,366	7:30-8:30 35	3:45-4:45 48	0	1,258	1,014	1,019	1,205																																																																																																																																																																																																																																									
17-NB				756		7:30-8:30 65	3:45-4:45 78						18-SB	5208 Pool	Glade to City Limits	15%	3,698	7,788	7:15-8:15 331	4:45-5:45 438	6,758	5,185	6,753	7,064	7,317	18-NB	4,090	7:15-8:15 430	4:45-5:45 328	19-SB	5401 Heritage	Glade to City Limits	-16%	2,982	7,304	7:15-8:15 417	3:00-4:00 400	8,656	7,362	6,502	5,353	7,847	19-NB	4,322	7:15-8:15 584	3:00-4:00 466	20-WB	301 W. Glade	City Limits to Colleyville Blvd.	6%	4,827	10,023	7:30-8:30 198	5:00-6:00 554	9,490	9,618	9,480	9,177	9,274	20-EB	5,196	7:30-8:30 510	5:00-6:00 382	21-WB	1101 Glade	Colleyville Blvd. to Blue Bonnet	To be counted at later date					12,322	13,085	13,557	13,433	14,250	21-EB						22-WB	2209 Glade	Bluebonnet to Pool	-31%	3,135	7,549	7:30-8:30 188	4:00-5:00 302	10,895	11,293	11,144	12,147	11,183	22-EB	4,414	7:30-8:30 335	4:00-5:00 338	23-WB	3400 Glade	Pool to City Limits	-21%	5,289	10,744	7:15-8:15 290	5:00-6:00 513	13,610	13,625	13,796	14,501	14,478	23-EB	5,455	7:15-8:15 480	5:00-6:00 414	24-SB	4012 Felps	Colleyville Blvd. to Cheek-Sparger	12%	158	346	9:00-10:00 14	5:45-6:45 17	310	279	361	343	346	24-NB	188	9:00-10:00 17	5:45-6:45 17	25-SB	4203 Brown Trail	Colleyville Blvd. to Cheek-Sparger	59%	5,340	8,733	7:15-8:15 412	5:00-6:00 507	5,484	5,110	5,197	6,045	7,084	25-NB	3,393	7:15-8:15 250	5:00-6:00 304	26-SB	4301 Bedford Rd.	Glade to Cheek-Sparger	-3%	2,296	5,186	7:15-8:15 155	5:00-6:00 244	5,353	6,012	5,096	5,252	4,955	26-NB	2,890	7:15-8:15 277	5:00-6:00 282	27-SB	4120 Jackson Rd.	Glade to Cheek-Sparger	19%	3,524	6,389	7:30-8:30 207	5:00-6:00 442	5,360	3,161	5,882	4,702	6,977	27-NB	2,865	7:30-8:30 252	5:00-6:00 252	28-SB	4405 Martin Pkwy.	Glade to Cheek-Sparger	1%	800	1,586	7:15-8:15 58	4:00-5:00 78	1,566	1,707	1,745	2,195	2,392	28-NB	786	7:15-8:15 81	4:00-5:00 71	29-SB	2800 Heritage	Glade to Cheek-Sparger	137%	2,026	3,949	7:15-8:15 125	5:15-6:15 228	1,663	2,079	1,009	724	398	29-NB	1,923	7:15-8:15 208	5:15-6:15 163	30-WB	300 Cheek-Sparger	Brown Trail to Colleyville Boulevard	To be counted at later date					9,606	9,801	11,649	11,318	9,690	30-EB													
18-SB	5208 Pool	Glade to City Limits	15%	3,698	7,788	7:15-8:15 331	4:45-5:45 438	6,758	5,185	6,753	7,064	7,317																																																																																																																																																																																																																																									
18-NB				4,090		7:15-8:15 430	4:45-5:45 328						19-SB	5401 Heritage	Glade to City Limits	-16%	2,982	7,304	7:15-8:15 417	3:00-4:00 400	8,656	7,362	6,502	5,353	7,847	19-NB	4,322	7:15-8:15 584	3:00-4:00 466	20-WB	301 W. Glade	City Limits to Colleyville Blvd.	6%	4,827	10,023	7:30-8:30 198	5:00-6:00 554	9,490	9,618	9,480	9,177	9,274	20-EB	5,196	7:30-8:30 510	5:00-6:00 382	21-WB	1101 Glade	Colleyville Blvd. to Blue Bonnet	To be counted at later date					12,322	13,085	13,557	13,433	14,250	21-EB						22-WB	2209 Glade	Bluebonnet to Pool	-31%	3,135	7,549	7:30-8:30 188	4:00-5:00 302	10,895	11,293	11,144	12,147	11,183	22-EB	4,414	7:30-8:30 335	4:00-5:00 338	23-WB	3400 Glade	Pool to City Limits	-21%	5,289	10,744	7:15-8:15 290	5:00-6:00 513	13,610	13,625	13,796	14,501	14,478	23-EB	5,455	7:15-8:15 480	5:00-6:00 414	24-SB	4012 Felps	Colleyville Blvd. to Cheek-Sparger	12%	158	346	9:00-10:00 14	5:45-6:45 17	310	279	361	343	346	24-NB	188	9:00-10:00 17	5:45-6:45 17	25-SB	4203 Brown Trail	Colleyville Blvd. to Cheek-Sparger	59%	5,340	8,733	7:15-8:15 412	5:00-6:00 507	5,484	5,110	5,197	6,045	7,084	25-NB	3,393	7:15-8:15 250	5:00-6:00 304	26-SB	4301 Bedford Rd.	Glade to Cheek-Sparger	-3%	2,296	5,186	7:15-8:15 155	5:00-6:00 244	5,353	6,012	5,096	5,252	4,955	26-NB	2,890	7:15-8:15 277	5:00-6:00 282	27-SB	4120 Jackson Rd.	Glade to Cheek-Sparger	19%	3,524	6,389	7:30-8:30 207	5:00-6:00 442	5,360	3,161	5,882	4,702	6,977	27-NB	2,865	7:30-8:30 252	5:00-6:00 252	28-SB	4405 Martin Pkwy.	Glade to Cheek-Sparger	1%	800	1,586	7:15-8:15 58	4:00-5:00 78	1,566	1,707	1,745	2,195	2,392	28-NB	786	7:15-8:15 81	4:00-5:00 71	29-SB	2800 Heritage	Glade to Cheek-Sparger	137%	2,026	3,949	7:15-8:15 125	5:15-6:15 228	1,663	2,079	1,009	724	398	29-NB	1,923	7:15-8:15 208	5:15-6:15 163	30-WB	300 Cheek-Sparger	Brown Trail to Colleyville Boulevard	To be counted at later date					9,606	9,801	11,649	11,318	9,690	30-EB																														
19-SB	5401 Heritage	Glade to City Limits	-16%	2,982	7,304	7:15-8:15 417	3:00-4:00 400	8,656	7,362	6,502	5,353	7,847																																																																																																																																																																																																																																									
19-NB				4,322		7:15-8:15 584	3:00-4:00 466						20-WB	301 W. Glade	City Limits to Colleyville Blvd.	6%	4,827	10,023	7:30-8:30 198	5:00-6:00 554	9,490	9,618	9,480	9,177	9,274	20-EB	5,196	7:30-8:30 510	5:00-6:00 382	21-WB	1101 Glade	Colleyville Blvd. to Blue Bonnet	To be counted at later date					12,322	13,085	13,557	13,433	14,250	21-EB						22-WB	2209 Glade	Bluebonnet to Pool	-31%	3,135	7,549	7:30-8:30 188	4:00-5:00 302	10,895	11,293	11,144	12,147	11,183	22-EB	4,414	7:30-8:30 335	4:00-5:00 338	23-WB	3400 Glade	Pool to City Limits	-21%	5,289	10,744	7:15-8:15 290	5:00-6:00 513	13,610	13,625	13,796	14,501	14,478	23-EB	5,455	7:15-8:15 480	5:00-6:00 414	24-SB	4012 Felps	Colleyville Blvd. to Cheek-Sparger	12%	158	346	9:00-10:00 14	5:45-6:45 17	310	279	361	343	346	24-NB	188	9:00-10:00 17	5:45-6:45 17	25-SB	4203 Brown Trail	Colleyville Blvd. to Cheek-Sparger	59%	5,340	8,733	7:15-8:15 412	5:00-6:00 507	5,484	5,110	5,197	6,045	7,084	25-NB	3,393	7:15-8:15 250	5:00-6:00 304	26-SB	4301 Bedford Rd.	Glade to Cheek-Sparger	-3%	2,296	5,186	7:15-8:15 155	5:00-6:00 244	5,353	6,012	5,096	5,252	4,955	26-NB	2,890	7:15-8:15 277	5:00-6:00 282	27-SB	4120 Jackson Rd.	Glade to Cheek-Sparger	19%	3,524	6,389	7:30-8:30 207	5:00-6:00 442	5,360	3,161	5,882	4,702	6,977	27-NB	2,865	7:30-8:30 252	5:00-6:00 252	28-SB	4405 Martin Pkwy.	Glade to Cheek-Sparger	1%	800	1,586	7:15-8:15 58	4:00-5:00 78	1,566	1,707	1,745	2,195	2,392	28-NB	786	7:15-8:15 81	4:00-5:00 71	29-SB	2800 Heritage	Glade to Cheek-Sparger	137%	2,026	3,949	7:15-8:15 125	5:15-6:15 228	1,663	2,079	1,009	724	398	29-NB	1,923	7:15-8:15 208	5:15-6:15 163	30-WB	300 Cheek-Sparger	Brown Trail to Colleyville Boulevard	To be counted at later date					9,606	9,801	11,649	11,318	9,690	30-EB																																															
20-WB	301 W. Glade	City Limits to Colleyville Blvd.	6%	4,827	10,023	7:30-8:30 198	5:00-6:00 554	9,490	9,618	9,480	9,177	9,274																																																																																																																																																																																																																																									
20-EB				5,196		7:30-8:30 510	5:00-6:00 382						21-WB	1101 Glade	Colleyville Blvd. to Blue Bonnet	To be counted at later date					12,322	13,085	13,557	13,433	14,250	21-EB						22-WB	2209 Glade	Bluebonnet to Pool	-31%	3,135	7,549	7:30-8:30 188	4:00-5:00 302	10,895	11,293	11,144	12,147	11,183	22-EB	4,414	7:30-8:30 335	4:00-5:00 338	23-WB	3400 Glade	Pool to City Limits	-21%	5,289	10,744	7:15-8:15 290	5:00-6:00 513	13,610	13,625	13,796	14,501	14,478	23-EB	5,455	7:15-8:15 480	5:00-6:00 414	24-SB	4012 Felps	Colleyville Blvd. to Cheek-Sparger	12%	158	346	9:00-10:00 14	5:45-6:45 17	310	279	361	343	346	24-NB	188	9:00-10:00 17	5:45-6:45 17	25-SB	4203 Brown Trail	Colleyville Blvd. to Cheek-Sparger	59%	5,340	8,733	7:15-8:15 412	5:00-6:00 507	5,484	5,110	5,197	6,045	7,084	25-NB	3,393	7:15-8:15 250	5:00-6:00 304	26-SB	4301 Bedford Rd.	Glade to Cheek-Sparger	-3%	2,296	5,186	7:15-8:15 155	5:00-6:00 244	5,353	6,012	5,096	5,252	4,955	26-NB	2,890	7:15-8:15 277	5:00-6:00 282	27-SB	4120 Jackson Rd.	Glade to Cheek-Sparger	19%	3,524	6,389	7:30-8:30 207	5:00-6:00 442	5,360	3,161	5,882	4,702	6,977	27-NB	2,865	7:30-8:30 252	5:00-6:00 252	28-SB	4405 Martin Pkwy.	Glade to Cheek-Sparger	1%	800	1,586	7:15-8:15 58	4:00-5:00 78	1,566	1,707	1,745	2,195	2,392	28-NB	786	7:15-8:15 81	4:00-5:00 71	29-SB	2800 Heritage	Glade to Cheek-Sparger	137%	2,026	3,949	7:15-8:15 125	5:15-6:15 228	1,663	2,079	1,009	724	398	29-NB	1,923	7:15-8:15 208	5:15-6:15 163	30-WB	300 Cheek-Sparger	Brown Trail to Colleyville Boulevard	To be counted at later date					9,606	9,801	11,649	11,318	9,690	30-EB																																																																
21-WB	1101 Glade	Colleyville Blvd. to Blue Bonnet	To be counted at later date					12,322	13,085	13,557	13,433	14,250																																																																																																																																																																																																																																									
21-EB													22-WB	2209 Glade	Bluebonnet to Pool	-31%	3,135	7,549	7:30-8:30 188	4:00-5:00 302	10,895	11,293	11,144	12,147	11,183	22-EB	4,414	7:30-8:30 335	4:00-5:00 338	23-WB	3400 Glade	Pool to City Limits	-21%	5,289	10,744	7:15-8:15 290	5:00-6:00 513	13,610	13,625	13,796	14,501	14,478	23-EB	5,455	7:15-8:15 480	5:00-6:00 414	24-SB	4012 Felps	Colleyville Blvd. to Cheek-Sparger	12%	158	346	9:00-10:00 14	5:45-6:45 17	310	279	361	343	346	24-NB	188	9:00-10:00 17	5:45-6:45 17	25-SB	4203 Brown Trail	Colleyville Blvd. to Cheek-Sparger	59%	5,340	8,733	7:15-8:15 412	5:00-6:00 507	5,484	5,110	5,197	6,045	7,084	25-NB	3,393	7:15-8:15 250	5:00-6:00 304	26-SB	4301 Bedford Rd.	Glade to Cheek-Sparger	-3%	2,296	5,186	7:15-8:15 155	5:00-6:00 244	5,353	6,012	5,096	5,252	4,955	26-NB	2,890	7:15-8:15 277	5:00-6:00 282	27-SB	4120 Jackson Rd.	Glade to Cheek-Sparger	19%	3,524	6,389	7:30-8:30 207	5:00-6:00 442	5,360	3,161	5,882	4,702	6,977	27-NB	2,865	7:30-8:30 252	5:00-6:00 252	28-SB	4405 Martin Pkwy.	Glade to Cheek-Sparger	1%	800	1,586	7:15-8:15 58	4:00-5:00 78	1,566	1,707	1,745	2,195	2,392	28-NB	786	7:15-8:15 81	4:00-5:00 71	29-SB	2800 Heritage	Glade to Cheek-Sparger	137%	2,026	3,949	7:15-8:15 125	5:15-6:15 228	1,663	2,079	1,009	724	398	29-NB	1,923	7:15-8:15 208	5:15-6:15 163	30-WB	300 Cheek-Sparger	Brown Trail to Colleyville Boulevard	To be counted at later date					9,606	9,801	11,649	11,318	9,690	30-EB																																																																																			
22-WB	2209 Glade	Bluebonnet to Pool	-31%	3,135	7,549	7:30-8:30 188	4:00-5:00 302	10,895	11,293	11,144	12,147	11,183																																																																																																																																																																																																																																									
22-EB				4,414		7:30-8:30 335	4:00-5:00 338						23-WB	3400 Glade	Pool to City Limits	-21%	5,289	10,744	7:15-8:15 290	5:00-6:00 513	13,610	13,625	13,796	14,501	14,478	23-EB	5,455	7:15-8:15 480	5:00-6:00 414	24-SB	4012 Felps	Colleyville Blvd. to Cheek-Sparger	12%	158	346	9:00-10:00 14	5:45-6:45 17	310	279	361	343	346	24-NB	188	9:00-10:00 17	5:45-6:45 17	25-SB	4203 Brown Trail	Colleyville Blvd. to Cheek-Sparger	59%	5,340	8,733	7:15-8:15 412	5:00-6:00 507	5,484	5,110	5,197	6,045	7,084	25-NB	3,393	7:15-8:15 250	5:00-6:00 304	26-SB	4301 Bedford Rd.	Glade to Cheek-Sparger	-3%	2,296	5,186	7:15-8:15 155	5:00-6:00 244	5,353	6,012	5,096	5,252	4,955	26-NB	2,890	7:15-8:15 277	5:00-6:00 282	27-SB	4120 Jackson Rd.	Glade to Cheek-Sparger	19%	3,524	6,389	7:30-8:30 207	5:00-6:00 442	5,360	3,161	5,882	4,702	6,977	27-NB	2,865	7:30-8:30 252	5:00-6:00 252	28-SB	4405 Martin Pkwy.	Glade to Cheek-Sparger	1%	800	1,586	7:15-8:15 58	4:00-5:00 78	1,566	1,707	1,745	2,195	2,392	28-NB	786	7:15-8:15 81	4:00-5:00 71	29-SB	2800 Heritage	Glade to Cheek-Sparger	137%	2,026	3,949	7:15-8:15 125	5:15-6:15 228	1,663	2,079	1,009	724	398	29-NB	1,923	7:15-8:15 208	5:15-6:15 163	30-WB	300 Cheek-Sparger	Brown Trail to Colleyville Boulevard	To be counted at later date					9,606	9,801	11,649	11,318	9,690	30-EB																																																																																																				
23-WB	3400 Glade	Pool to City Limits	-21%	5,289	10,744	7:15-8:15 290	5:00-6:00 513	13,610	13,625	13,796	14,501	14,478																																																																																																																																																																																																																																									
23-EB				5,455		7:15-8:15 480	5:00-6:00 414						24-SB	4012 Felps	Colleyville Blvd. to Cheek-Sparger	12%	158	346	9:00-10:00 14	5:45-6:45 17	310	279	361	343	346	24-NB	188	9:00-10:00 17	5:45-6:45 17	25-SB	4203 Brown Trail	Colleyville Blvd. to Cheek-Sparger	59%	5,340	8,733	7:15-8:15 412	5:00-6:00 507	5,484	5,110	5,197	6,045	7,084	25-NB	3,393	7:15-8:15 250	5:00-6:00 304	26-SB	4301 Bedford Rd.	Glade to Cheek-Sparger	-3%	2,296	5,186	7:15-8:15 155	5:00-6:00 244	5,353	6,012	5,096	5,252	4,955	26-NB	2,890	7:15-8:15 277	5:00-6:00 282	27-SB	4120 Jackson Rd.	Glade to Cheek-Sparger	19%	3,524	6,389	7:30-8:30 207	5:00-6:00 442	5,360	3,161	5,882	4,702	6,977	27-NB	2,865	7:30-8:30 252	5:00-6:00 252	28-SB	4405 Martin Pkwy.	Glade to Cheek-Sparger	1%	800	1,586	7:15-8:15 58	4:00-5:00 78	1,566	1,707	1,745	2,195	2,392	28-NB	786	7:15-8:15 81	4:00-5:00 71	29-SB	2800 Heritage	Glade to Cheek-Sparger	137%	2,026	3,949	7:15-8:15 125	5:15-6:15 228	1,663	2,079	1,009	724	398	29-NB	1,923	7:15-8:15 208	5:15-6:15 163	30-WB	300 Cheek-Sparger	Brown Trail to Colleyville Boulevard	To be counted at later date					9,606	9,801	11,649	11,318	9,690	30-EB																																																																																																																					
24-SB	4012 Felps	Colleyville Blvd. to Cheek-Sparger	12%	158	346	9:00-10:00 14	5:45-6:45 17	310	279	361	343	346																																																																																																																																																																																																																																									
24-NB				188		9:00-10:00 17	5:45-6:45 17						25-SB	4203 Brown Trail	Colleyville Blvd. to Cheek-Sparger	59%	5,340	8,733	7:15-8:15 412	5:00-6:00 507	5,484	5,110	5,197	6,045	7,084	25-NB	3,393	7:15-8:15 250	5:00-6:00 304	26-SB	4301 Bedford Rd.	Glade to Cheek-Sparger	-3%	2,296	5,186	7:15-8:15 155	5:00-6:00 244	5,353	6,012	5,096	5,252	4,955	26-NB	2,890	7:15-8:15 277	5:00-6:00 282	27-SB	4120 Jackson Rd.	Glade to Cheek-Sparger	19%	3,524	6,389	7:30-8:30 207	5:00-6:00 442	5,360	3,161	5,882	4,702	6,977	27-NB	2,865	7:30-8:30 252	5:00-6:00 252	28-SB	4405 Martin Pkwy.	Glade to Cheek-Sparger	1%	800	1,586	7:15-8:15 58	4:00-5:00 78	1,566	1,707	1,745	2,195	2,392	28-NB	786	7:15-8:15 81	4:00-5:00 71	29-SB	2800 Heritage	Glade to Cheek-Sparger	137%	2,026	3,949	7:15-8:15 125	5:15-6:15 228	1,663	2,079	1,009	724	398	29-NB	1,923	7:15-8:15 208	5:15-6:15 163	30-WB	300 Cheek-Sparger	Brown Trail to Colleyville Boulevard	To be counted at later date					9,606	9,801	11,649	11,318	9,690	30-EB																																																																																																																																						
25-SB	4203 Brown Trail	Colleyville Blvd. to Cheek-Sparger	59%	5,340	8,733	7:15-8:15 412	5:00-6:00 507	5,484	5,110	5,197	6,045	7,084																																																																																																																																																																																																																																									
25-NB				3,393		7:15-8:15 250	5:00-6:00 304						26-SB	4301 Bedford Rd.	Glade to Cheek-Sparger	-3%	2,296	5,186	7:15-8:15 155	5:00-6:00 244	5,353	6,012	5,096	5,252	4,955	26-NB	2,890	7:15-8:15 277	5:00-6:00 282	27-SB	4120 Jackson Rd.	Glade to Cheek-Sparger	19%	3,524	6,389	7:30-8:30 207	5:00-6:00 442	5,360	3,161	5,882	4,702	6,977	27-NB	2,865	7:30-8:30 252	5:00-6:00 252	28-SB	4405 Martin Pkwy.	Glade to Cheek-Sparger	1%	800	1,586	7:15-8:15 58	4:00-5:00 78	1,566	1,707	1,745	2,195	2,392	28-NB	786	7:15-8:15 81	4:00-5:00 71	29-SB	2800 Heritage	Glade to Cheek-Sparger	137%	2,026	3,949	7:15-8:15 125	5:15-6:15 228	1,663	2,079	1,009	724	398	29-NB	1,923	7:15-8:15 208	5:15-6:15 163	30-WB	300 Cheek-Sparger	Brown Trail to Colleyville Boulevard	To be counted at later date					9,606	9,801	11,649	11,318	9,690	30-EB																																																																																																																																																							
26-SB	4301 Bedford Rd.	Glade to Cheek-Sparger	-3%	2,296	5,186	7:15-8:15 155	5:00-6:00 244	5,353	6,012	5,096	5,252	4,955																																																																																																																																																																																																																																									
26-NB				2,890		7:15-8:15 277	5:00-6:00 282						27-SB	4120 Jackson Rd.	Glade to Cheek-Sparger	19%	3,524	6,389	7:30-8:30 207	5:00-6:00 442	5,360	3,161	5,882	4,702	6,977	27-NB	2,865	7:30-8:30 252	5:00-6:00 252	28-SB	4405 Martin Pkwy.	Glade to Cheek-Sparger	1%	800	1,586	7:15-8:15 58	4:00-5:00 78	1,566	1,707	1,745	2,195	2,392	28-NB	786	7:15-8:15 81	4:00-5:00 71	29-SB	2800 Heritage	Glade to Cheek-Sparger	137%	2,026	3,949	7:15-8:15 125	5:15-6:15 228	1,663	2,079	1,009	724	398	29-NB	1,923	7:15-8:15 208	5:15-6:15 163	30-WB	300 Cheek-Sparger	Brown Trail to Colleyville Boulevard	To be counted at later date					9,606	9,801	11,649	11,318	9,690	30-EB																																																																																																																																																																								
27-SB	4120 Jackson Rd.	Glade to Cheek-Sparger	19%	3,524	6,389	7:30-8:30 207	5:00-6:00 442	5,360	3,161	5,882	4,702	6,977																																																																																																																																																																																																																																									
27-NB				2,865		7:30-8:30 252	5:00-6:00 252						28-SB	4405 Martin Pkwy.	Glade to Cheek-Sparger	1%	800	1,586	7:15-8:15 58	4:00-5:00 78	1,566	1,707	1,745	2,195	2,392	28-NB	786	7:15-8:15 81	4:00-5:00 71	29-SB	2800 Heritage	Glade to Cheek-Sparger	137%	2,026	3,949	7:15-8:15 125	5:15-6:15 228	1,663	2,079	1,009	724	398	29-NB	1,923	7:15-8:15 208	5:15-6:15 163	30-WB	300 Cheek-Sparger	Brown Trail to Colleyville Boulevard	To be counted at later date					9,606	9,801	11,649	11,318	9,690	30-EB																																																																																																																																																																																									
28-SB	4405 Martin Pkwy.	Glade to Cheek-Sparger	1%	800	1,586	7:15-8:15 58	4:00-5:00 78	1,566	1,707	1,745	2,195	2,392																																																																																																																																																																																																																																									
28-NB				786		7:15-8:15 81	4:00-5:00 71						29-SB	2800 Heritage	Glade to Cheek-Sparger	137%	2,026	3,949	7:15-8:15 125	5:15-6:15 228	1,663	2,079	1,009	724	398	29-NB	1,923	7:15-8:15 208	5:15-6:15 163	30-WB	300 Cheek-Sparger	Brown Trail to Colleyville Boulevard	To be counted at later date					9,606	9,801	11,649	11,318	9,690	30-EB																																																																																																																																																																																																										
29-SB	2800 Heritage	Glade to Cheek-Sparger	137%	2,026	3,949	7:15-8:15 125	5:15-6:15 228	1,663	2,079	1,009	724	398																																																																																																																																																																																																																																									
29-NB				1,923		7:15-8:15 208	5:15-6:15 163						30-WB	300 Cheek-Sparger	Brown Trail to Colleyville Boulevard	To be counted at later date					9,606	9,801	11,649	11,318	9,690	30-EB																																																																																																																																																																																																																											
30-WB	300 Cheek-Sparger	Brown Trail to Colleyville Boulevard	To be counted at later date					9,606	9,801	11,649	11,318	9,690																																																																																																																																																																																																																																									
30-EB																																																																																																																																																																																																																																																					

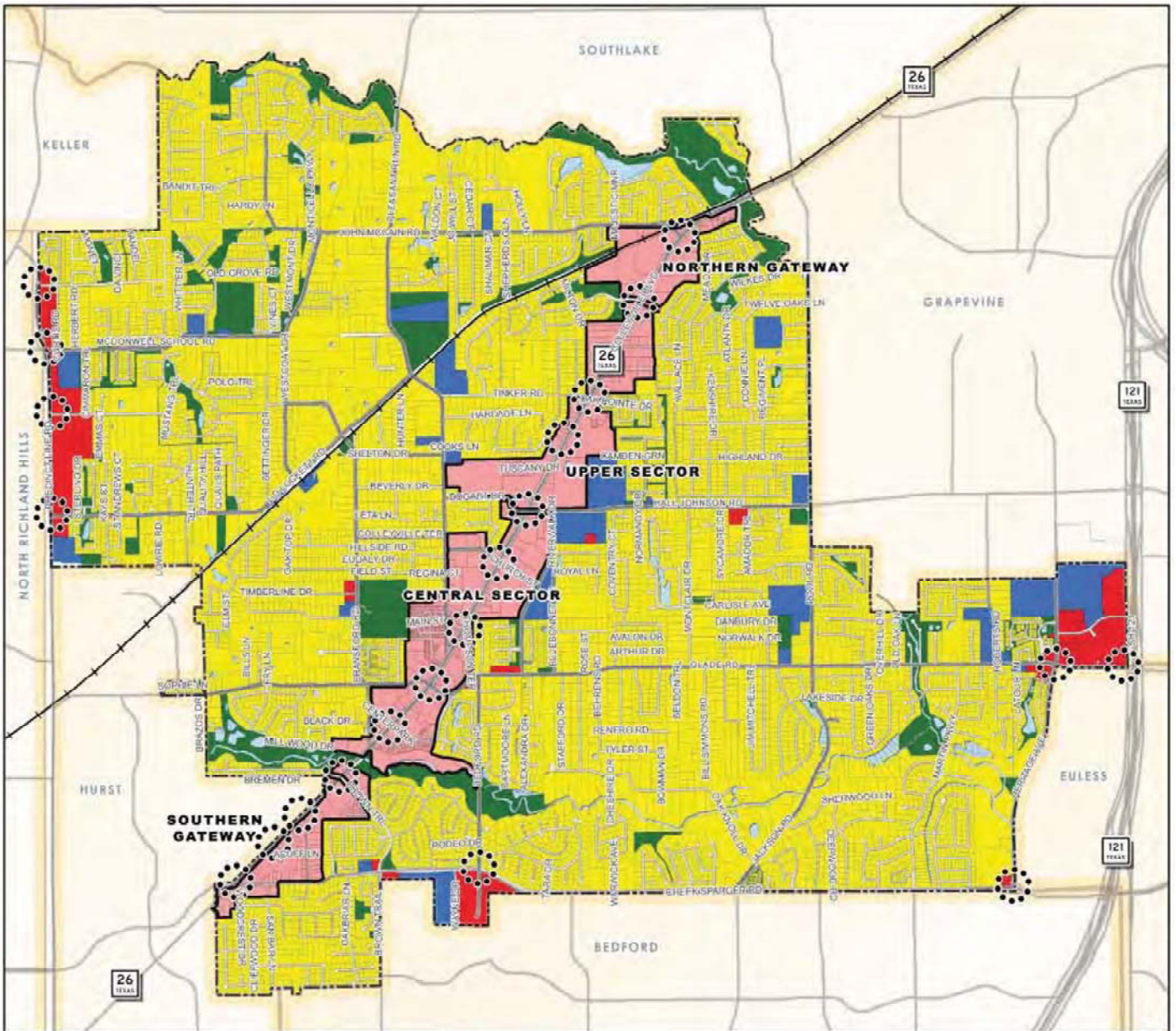
#	Roadway	Location		24-Hour		Peak Hour Totals		Prior Year's 24 Hour Totals				
				Directional	Combined	AM Peak	PM Peak	2016	2015	2014	2013	2012
31-WB	1000 Cheek-Sparger	Warwick Ave to Brown Trail	-17%	5,065	8,768	7:15-8:15 424	5:00-6:00 588	10,569	10,234	12,428	12,433	10,537
31-EB				3,703		7:15-8:15 366	5:00-6:00 353					
32-WB	2300 Cheek-Sparger	Jackson to Warwick	4%	6,285	10,821	7:30-8:30 390	5:00-6:00 774	10,373	8,244	10,340	11,297	9,216
32-EB				4,536		7:30-8:30 454	5:00-6:00 390					
33-WB	3100 Cheek-Sparger	Heritage to Jackson	-13%	5,805	11,226	7:30-8:30 308	4:45-5:45 660	12,882	11,282	12,208	12,265	11,583
33-EB				5,421		7:30-8:30 549	4:45-5:45 474					
34-SB	3809 Brown Trail	Cheek-Sparger to City Limits (Bedford)	-4%	3,233	7,616	7:15-8:15 194	5:00-6:00 335	7,947	8,122	7,738	7,838	8,013
34-NB				4,383		7:15-8:15 371	5:00-6:00 396					
40-SB	S.H. 26	South of Brown Trail	3%	11,579	26,085	7:30-8:30 554	4:45-5:45 1185	25,242				
40-NB				14,506		7:30-8:30 1276	4:45-5:45 1100					
41-SB	S.H. 26	Brown Trail to Centerpark	-16%	13,428	28,261	7:30-8:30 678	4:30-5:30 1302	33,492			30,460	
41-NB				14,833		7:30-8:30 1307	4:30-5:30 1173					
42-SB	S.H. 26	Centerpark to Glade	-15%	12,999	26,176	7:30-8:30 673	4:30-5:30 1300	30,676			28,664	
42-NB				13,177		7:30-8:30 1205	4:30-5:30 985					
43-SB	S.H. 26	Glade to Church	5%	16,735	30,767	7:30-8:30 860	4:30-5:30 1684	29,373			27,759	
43-NB				14,032		7:30-8:30 1292	4:30-5:30 1041					
44-SB	S.H. 26	Church to Hall-Johnson	-6%	14,106	27,712	7:30-8:30 788	4:15-5:15 1414	29,574			27,825	
44-NB				13,606		7:30-8:30 1237	4:15-5:15 973					
45-SB	S.H. 26	Hall-Johnson to Tinker	-10%	12,631	25,340	7:45-8:45 794	4:45-5:45 1297	28,248			25,352	
45-NB				12,709		7:45-8:45 1141	4:45-5:45 913					
46-SB	S.H. 26	Tinker to John McCain	-1%	13,211	26,388	7:45-8:45 873	4:15-5:15 1338	26,613			21,715	
46-NB				13,177		7:45-8:45 1188	4:15-5:15 983					
47-SB	S.H. 26	North of John McCain	2%	17,757	35,546	7:30-8:30 1067	4:45-5:45 1909	34,890				
47-NB				17,789		7:30-8:30 1810	4:45-5:45 1346					

Existing Zoning Map

Please contact the Planning Director to confirm existing zoning.



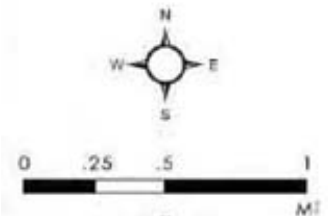
Future Land Use Plan



FUTURE LAND USE MAP

- RESIDENTIAL
- COMMERCIAL
- INSTITUTIONAL
- PARKS/OPEN SPACE
- COLLEYVILLE BLVD CORRIDOR

- SALES TAX PREFERRED INTERSECTION
- COLLEYVILLE CITY LIMITS
- MAJOR ROADS
- +
+
 RAILROADS
- WATER BODIES AND CREEKS
- PARCELS



A COMPREHENSIVE PLAN SHALL NOT CONSTITUTE ZONING REGULATIONS OR ESTABLISH ZONING DISTRICT BOUNDARIES